

FIND YOUR
PLACE



**MALVERN ROAD,
LONDON, NW6 5PU
£2,100 PER MONTH**

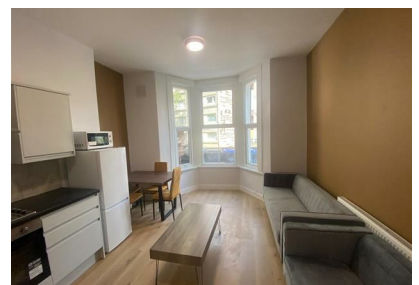


We are delighted to offer this two-bedroom ground floor flat, set in a pleasant building on a quiet residential street.

The property features two spacious bedrooms, a bright open-plan living area, and a fully equipped kitchen with washer-dryer and fridge/freezer. It also has a modern bathroom and hardwood flooring throughout, giving the flat a fresh, contemporary feel. Additional benefits include access to a private garden and an intercom system.

Ideally located in the heart of West Kilburn, close to a post office, schools, nurseries, Vale Community Centre, parks, and local shops. Queen's Park Station is just a 5-minute walk (0.8 miles), providing excellent transport links.

Available from 9th March



401A Kilburn High Road, Maida Vale, London, NW6 7QE
Tel: 02074356100 | Email: contact@fyplondon.co.uk
www.fyplondon.co.uk